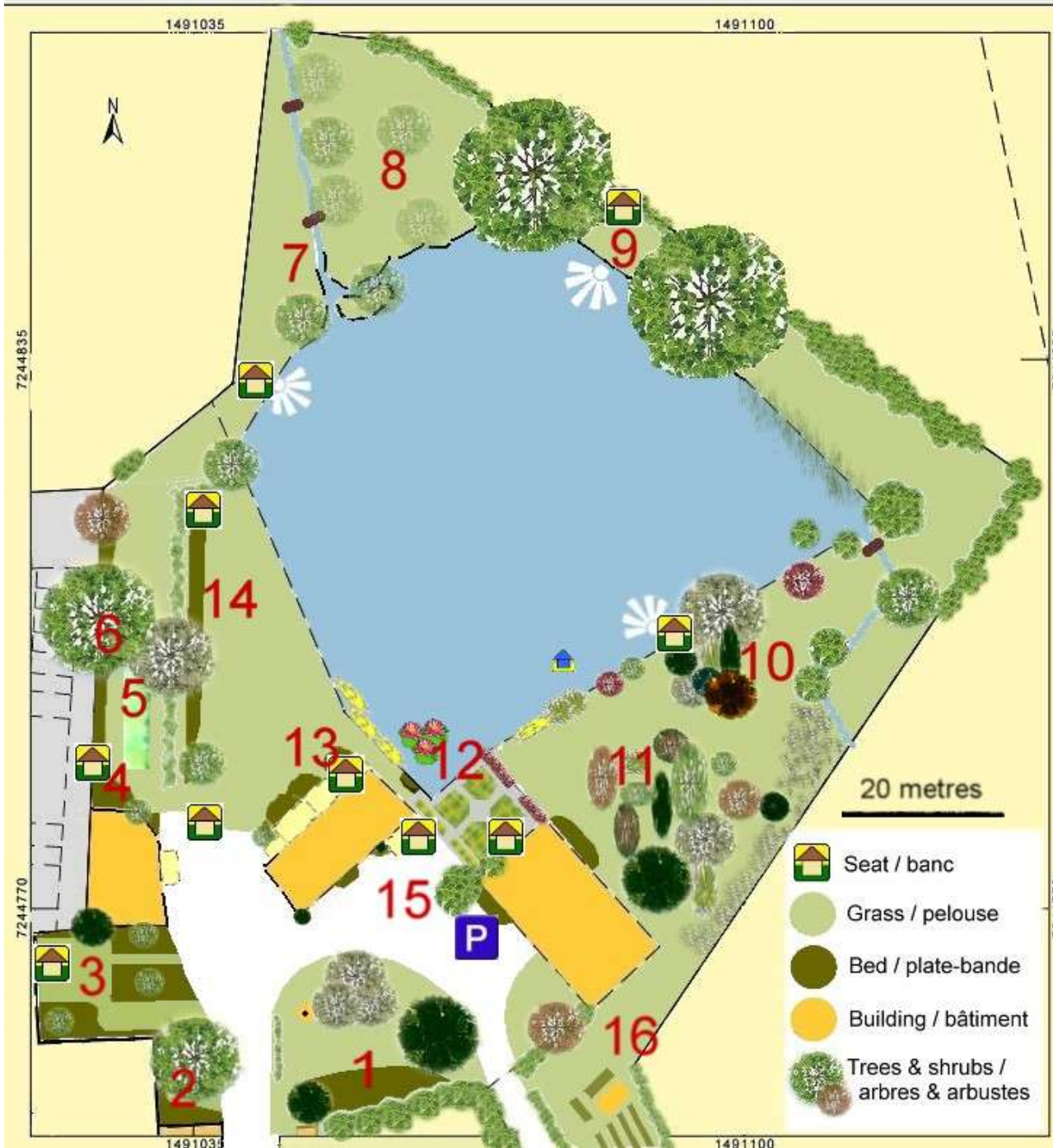


La Basse Cour Garden Plan

www.normandie-chambres.co.uk



1. Spring Garden
2. "Window" Garden
3. Walled Garden
4. Shady Bed
5. Rose Tunnel
6. Fernery and Walnut Tree
7. Damp Meadow and Wildflowers
8. Copse
9. Pond Viewpoint and 200 Year Oaks
10. Ornamental Shrubs
11. Ornamental Trees
12. Slate Garden
13. Terrace Beds
14. Long Herbaceous Border
15. Courtyard
16. Vegetable Garden and Wildflowers

PLANT LIST (2016)

0. Pond and verges

1. Eupatorium cannabinum
2. Carex muskingumensis
3. Glyceria maxima variegata
4. Iris pseudacorus
5. Lysimachia punctata
6. Ligularia dentata Desdemona

7. Nenufar Charles de Meurville
8. Nenufar White, unknown variety
9. Myriophyllum brasiliensis

10. Helianthus "Lemon Queen"
11. Anemone hupehensis 'Whirlwind'
12. Typha maxima

1. Spring Garden

13. Camellia Blood of China
14. Camellia Margaret Davis
15. Camellia Doctor Burnside
16. Camellia Man Size
17. Camellia Spring Festival
18. Camellia Superba
19. Camellia Margherita Coleoni
20. Camellia Nuccio's Gem
21. Rhododendron
22. Azalea Rosa King
23. Azalea Dorothy Hayden
24. Azalea Herbert
25. Clematis Pillu
26. Clematis Hagley Hybrid
27. Cleamatis Ville de Lyon
28. Rhododendron Horizon Monarch
29. Rhododendron Visoy
30. Rhododendron Albert Schweizer
31. Rhododendron Various
32. Pinus sylvestris "Fastigiata"
33. Leucothoe 'Curly Red'
34. Ilex meserveae

2. Window Garden

35. Ceanothus
36. Sinocalycanthus raulstonii 'Hartlage Wine'
37. Ophiopogon jaburan vittatus
38. Viola "Heartthrob"
39. Actaea simplex "James Compton"
40. Actaea simplex "Brunette"
41. Podophyllum Spotty Dotty
42. Acer "Crimson Queen"
43. Acer "Emerald Lace"
44. Acer palmatum "Tsuma gaki"
45. Acer Sumi-Nagasaki
46. Acer Aureum
47. H. Spartacus
48. H. Dancing Queen
49. H. Touch of Class
50. H. Barbara Ann
51. Tiarella Timbuktu
52. Asplenium scolopendrium 'Angustifolia'
53. Athyrium niponicum pictum
54. Heuchera Obsidian
55. Cacalia delphinifolia
56. Deinanthe bifida
57. Deinanthe caerulea 'Blue Wonder'
58. Persicaria virginiana 'Painter's Palette'

3. Walled Garden

a) Right (barn wall)

59. Juniper sempervirens
60. Cupressus "Totem"
61. Buxus sempervirens
62. Imperata cylindrica 'Red Baron'
63. Prunus glandulosa Flore Plena
64. Mansoniere privet?
65. Acer Palmatum Shishigashira (Crispi)
66. Choisya ternata "Sundance"
67. Clematis Recta Purpurea
68. Romneya coulteri
69. Eremerus himalaicus
70. Corylus avellana 'Contorta'
71. Paeonia suffruticosa Fen He Piao Jiang

72. Paeonia suffruticosa Lu He Hong
73. Allium moly
74. Allium christophii
75. Hemerocallis Cara Mia
76. Hemerocallis 'Helle Berlinerin'
77. Clematis integrifolia
78. Buddleja davidii "Rêve de Papillon"

b) Left (centre)

79. Prostanthea cuneata
80. Hydrangea paniculata "Vanille Fraise"
81. Hibiscus
82. Hibiscus
83. Paeonia suffruticosa
84. Fuchsia "Mrs Popples"
85. Acer palmatum 'Senkaki' (Coral Bark Maple)
86. Euphorbia characias "Silver Swan"
87. Robinia pseudoacacia 'Twisty Baby'
88. Iris sibirica white
89. Iris sibirica blue
90. Iris chrysographes "Black Knight"
91. Physocarpus opulifolius 'Diablo'
92. Mahonia aquifolia
93. Sedum kamtschaticum
94. Sedum pachyclados
95. Armeria maritima
96. Salvia forskahlei

c) Top (bench)

97. Phyllostachys nigra
98. Miscanthus strictus
99. Aloe saponaria
100. Trachelospermum jasminoides
101. Phormium Apricot Queen

Contd ...

3. Walled Garden (contd.)

d) Back left corner

- 102. Viburnum carlesii
- 103. Kolkwitzia amabilis "Pink Cloud"
- 104. B. fallowiana Alba
- 105. Cornus alba sibirica variegata
- 106. Cornus sanguinea 'Midwinter Fire'
- 107. Rosmarinus "Mrs Jessops Upright"
- 108. Euphorbia "Fireglow"
- 109. Ginkgo biloba
- 110. Cornus controversa 'Pagoda'
- 111. Salvia officinalis purpurea

e) Left Side Wall

- 112. Cercidiphyllum japonicum
- 113. Hydrangea

4. Shady Bed

- 114. Philadelphus coronarius
- 115. Hosta :various
- 116. Heuchera Tiramisu
- 117. Heuchera Stoplight
- 118. Heuchera Rainforest Sunrise
- 119. Kirengeshoma palmata
- 120. Helleborus x ballardiae HGC Pink Frost
- 121. Clematis montana
- 122. Dicentra spectabile "Alba"

5. Rose Tunnel

a) Roses

- 123. Rosa Orfeo
- 124. Rosa 'High Society
- 125. Rosa Golden Parfum
- 126. Rosa Perpetually Yours
- 127. Rosa Iceberg
- 128. Rosa New Dawn
- 129. Rosa Handel
- 130. Rosa Dublin Bay
- 131. Rosa Bridge of Sighs

b) Clematis

- 132. C. Hagley Hybrid
- 133. C. Etoile Violette
- 134. C. Rouge Cardinal
- 135. C. Multiblue
- 136. C. variety unknown
- 137. C. Asao
- 138. C. Henryi

6. Fernery beds and stumpery

- 139. Gunnera manicata
- 140. Carex greyii
- 141. Persicaria 'Lance Corporal'
- 142. Athyrium niponicum pictum
- 143. Polystichum setiferum "Plumosum Bevis"
- 144. Dryopteris erythrosora
- 145. Polystichum polyblepharum
- 146. Cyrtomium fortunei
- 147. H. Gypsy Rose
- 148. Rosa Kew Rambler
- 149. Dryopteris cycadina
- 150. Cyrtomium falcatum
- 151. Acanthus mollis
- 152. Polystichum setiferum 'Proliferum Wollastonii'

7. Damp Meadow and Wildflowers

- 153. Comfrey, Ragged Robin, Yellow Rattle,
- 154. Foxgloves, Herb Robert, Cowslip, Buttercups,
- 155. Cuckoo flower, Common yarrow, Field poppy,
- 156. Teasel, Ragged Robin, Greater celandine, Thistle etc.

8. Copse

- 157. Equisetum hyemale
- 158. Lysimachia ciliata 'Firecracker'
- 159. Gunnera chilensis (tinctoria)
- 160. Euphorbia "Fireglow"
- 161. Main tree type : Alder
- 162. Persicaria virginiana Lance Corporal
- 163. Salix integra "Hakuro-mishiki"
- 164. Pulmonaria saccharata Lewis Palmer

9. Pond Viewpoint and 200 Year Oaks

- 165. Tiarella 'Sugar & Spice'
- 166. Rhododendrons
- 167. Brunnera macrophylla 'Mr Morse'
- 168. Brunnera macrophylla 'Jack Frost'
- 169. Ilex variety unknown
- 170. Macleaya cordata (dec?)
- 171. Persicaria polymorpha

10. Ornamental Shrubs

- 172. Hydrangea quercifolia "Alice"
- 173. Hydrangea macrophylla "Taube"
- 174. Hydrangea macrophylla "Libelle"
- 175. Hypericum "Hidcote"
- 176. Salix integra "Hakuro-mishiki"
- 177. Sambucus nigra "Black Lace"
- 178. Cotinus "Grace"
- 179. Pittosporum Garnettii
- 180. Viburnum plicatum "Mariesii"
- 181. Cercis canadensis "Forest Pansy"

11. Ornamental Trees

- 182. Amelanchier lamarckii 'Slender Silhouette'
- 183. Sorbus Aria "Majestica"
- 184. Prunus serrula
- 185. Sorbus 'Joseph Rock'
- 186. Robinia x slavini
- 187. Cornus kousa 'China Girl'
- 188. Pyrus salicifolia 'Pendula'
- 189. Magnolia stellata 'Waterlily'
- 190. Liquidambar styraciflua 'Slender Silhouette'
- 191. Parrotia persica 'Vanessa'
- 192. Viburnum opulus "Roseum"
- 193. Catalpa erubescens "Purpurea"
- 194. Liquidambar styraciflua 'Aureum'
- 195. Liquidambar styraciflua 'Worplesdon'

Contd ...

11. Ornamental Trees : Barn Bed

- 196. Fuchsia White Knight's Pearl
- 197. Fuchsia
- 198. Rodgersia
- 199. Tricyrtis formosana
- 200. Waldsteinia ternata
- 201. Hortensia
- 202. Heuchera Various

12. Slate Garden : Kitchen Window Bed

- 203. H. Praying Hands
- 204. H. Catherine
- 205. Paeonia moutan x lutea 'High Noon'
- 206. Delphiniums
- 207. Acidanthera murielae (syn. Callianthus/Gladiolus mur.)
- 208. Ligularia dentata Desdemona
- 209. Sisyrinchium 'Californian Skies'
- 210. Roscoea purpurea

12. Slate Garden : Main Beds

- 211. Allium nigrum
- 212. Allium Mount Everest (or White Giant)
- 213. Allium Purple Sensation
- 214. Carex Red Rooster
- 215. Carex Auburn
- 216. Persicaria Red Dragon
- 217. Pennisetum macrourum Tail Feathers
- 218. Pennisetum Cream Falls
- 219. Carex Bronze Curls
- 220. Carex Frosted Curls
- 221. Milium Aureum
- 222. Pennisetum glaucum Purple Majesty
- 223. Pennisetum setaceum rubrum
- 224. Libertia peregrinans
- 225. Melica Red Spire
- 226. Fatsia japonica 'Spider's Web'
- 227. Hosta Blue Mouse Ears
- 228. Miscanthus
- 229. Oat Grass
- 230. Fagus sylvatica 'Atropurpurea'

13. Terrace Beds

- 231. Ajuga reptans 'Black Scallop'
- 232. Hydrangea Nymphe
- 233. Acanthus mollis
- 234. Geum chiloense "Mrs Bradshaw"
- 235. Hamamelis × intermedia 'Arnold Promise'
- 236. Clematis "Justa"
- 237. Clematis Niobe
- 238. Nectaroscordum siculum
- 239. Narcissus Golden Ducat
- 240. Euphorbia characias
- 241. Geranium sanguineum "Max Frei"
- 242. Euphorbia "Fireglow"
- 243. H. Patriot
- 244. Aquilegia various
- 245. Aquilegia William Guinness
- 246. Anemone hupehensis var. japonica 'Prinz Heinric
- 247. Yucca gloriosa 'variegata'
- 248. Hellebores
- 249. Schizostylis coccinea
- 250. Geum Mai Tai
- 251. Anemone japonica
- 252. Incarvillea delavayi alba

13. Terrace : Pots

- 253. Allium schubertii
- 254. H. Empress Wu
- 255. H. Wide Brim
- 256. H. T. Rex
- 257. H. Regal
- 258. H. Gypsy Rose
- 259. H. Centre of Attraction
- 260. H. sieboldii aurea and/or elegans
- 261. H. Devon
- 262. H. Guacamole
- 263. H. Sum & Substance
- 264. H. Devon
- 265. H. Golden Tiara

14. Long Border

- 266. Sisyrinchium striatum
- 267. Gaura lindheimeri
- 268. Tulipa Uncle Tom
- 269. Canna "Durban"
- 270. Canna species
- 271. Magnolia Leonard Messel
- 272. Penstemon
- 273. Tulips
- 274. Euphorbia characias "Black Pearl"
- 275. Aster dumosus/novi-belgiae augenweide
- 276. Coreopsis verticillata Zagreb
- 277. Anemone hybrida "Prinz Heinrich"
- 278. Bergenia cordifolia
- 279. Tanacetum Coccineum Robinson's red
- 280. Papaver Orientale Allegro
- 281. Papaver Orientale Sturmfackel
- 282. Fuchsia Alice Hoffman
- 283. Dicentra Spectabile
- 284. Catanche caerulea
- 285. Sedum Herbstfreude
- 286. Phlox Orange Perfection
- 287. Phlox Uspech
- 288. Phlox Leo Schlageter
- 289. Lychnis chalcedonica
- 290. Hemerocallis 'Flamboyant'
- 291. Hemerocallis 'Rajah'
- 292. Hemerocallis 'Charles Johnston'
- 293. Schizostylis coccinea
- 294. Agapanthus Africans
- 295. Papaver Icelandica
- 296. Tradescantia Blue Stone
- 297. Tradescantia Rosi
- 298. Fuchsia riccartoni
- 299. Aстранtia major Rosa
- 300. Aстранtia major Shaggy
- 301. Gillenia trifoliata
- 302. Paeonia tenuifolia
- 303. Lupin 'Mon Château'

Contd ...

14. Long Border

304. Lupin 'Chandelier'
305. Lupin 'Gentilhomme'
306. Acidanthera
307. Delphinium 'Astolat'
308. Delphinium 'Black Knight'
309. Echinacea purpurea
310. Paeony Pink
311. Paeony Sword Dance (red :largest)
312. Gaillardia 'Burgunder'
313. Gaillardia 'Kobold'
314. Oxalis triangularis (purple shamrock)
315. Liatris spicata
316. Eupatorium rugosum Chocolate
317. Lupin white ?
318. Dahlia Bishop of Oxford orange

15. Courtyard : Terrace Trough & Pots

319. Sedum acre Yellow Queen
320. Saxifraga arendsii Ware's Crimson
321. Saxifraga arendsii Touran Large White
322. Sedum spathulifolium cape blanco
323. Tulipa tarda
324. Sedum sieboldii variegatum
325. Buxus sempervirens
326. Dutch Iris

15. Courtyard : House Beds

327. Sweet bay tree
328. Aquilegia
329. Freesia
330. Bergenia cordifolia

331. Rosa "Jude the Obscure"
332. Hosta
333. Fuchsia
334. Acanthus mollis
335. Cosmos atrosanguineus
336. Dahlia Bishop of Llandaff
337. Sisyrinchium 'Californian Skies'

15. Courtyard : Parking Bed

338. Anemone hybrida 'Honorine Jobert'
339. Bergenia
340. Muscari
341. Geum Lady Stratheden
342. Geum Cocktail Gimlet
343. Aстранtia Hapsden Blood
344. Aстранtia Star of Passion
345. Galanthus Karine
346. Knautia macedonica
347. Snowdrops
348. Tulip viridiflora 'Spring Green'
349. Tulip 'Queen of the Night'

15. Courtyard : Gravel

350. Verbena bonariensis
351. Sedum reflexum
352. Stipa tenuissima 'Angel Hair'

15. Courtyard : Pots

353. Ismene festalis
354. Nerine bowdenii
355. Clerodendron bungei 'Pink Diamond'
356. Tulip Apeldoorn

16. Veg patch

357. Rosa Centenaire de Lourdes (red)
358. Rosa – unnamed yellow variety
359. French bean, tomato, melon, pepper, courgette, onion, autumn raspberry, jostaberry, butternut squash

Hedges

360. Carpinus betulus
361. Lonicera nitida

15. Courtyard : Rocking Chair

362. Delosperma cooperi
363. Saxifraga "Peter Pan"
364. Sedum spurium "tricolor"
365. Campanula "Dixon's Gold"
366. Phlox subulata "Emerald Cushion Blue"